

ASNA DataGate Studio Working with Databases

Working with Databases	1
Creating a New Database	1
Creating a New Database	4
Labeling an Existing Database.....	7
Changing an Existing Database	9
Removing an Existing Database.....	11
Browsing for a Database Folder	12

Working with Databases

DataGate Studio is the primary database management tool set for all DataGate servers, but it is the only database management program for DataGate for Windows servers. When using DataGate for Windows servers, one of the first tasks is to create and label a database. This can only be accomplished with the Work with Databases tool. Work with Databases provides functions that can be useful with other DataGate servers too.

The Work with Databases tool provides these functions:

- Create a New Database
- Label an Existing Database
- Remove a Database
- Change a Database
- Browse Databases

Creating a New Database

You can perform DataGate for Windows server tasks with DataGate Studio, including creating a new database.

Creating a new database creates the internal catalog object, which maintains the set of attributes and relationships for all of the database files within a particular database.

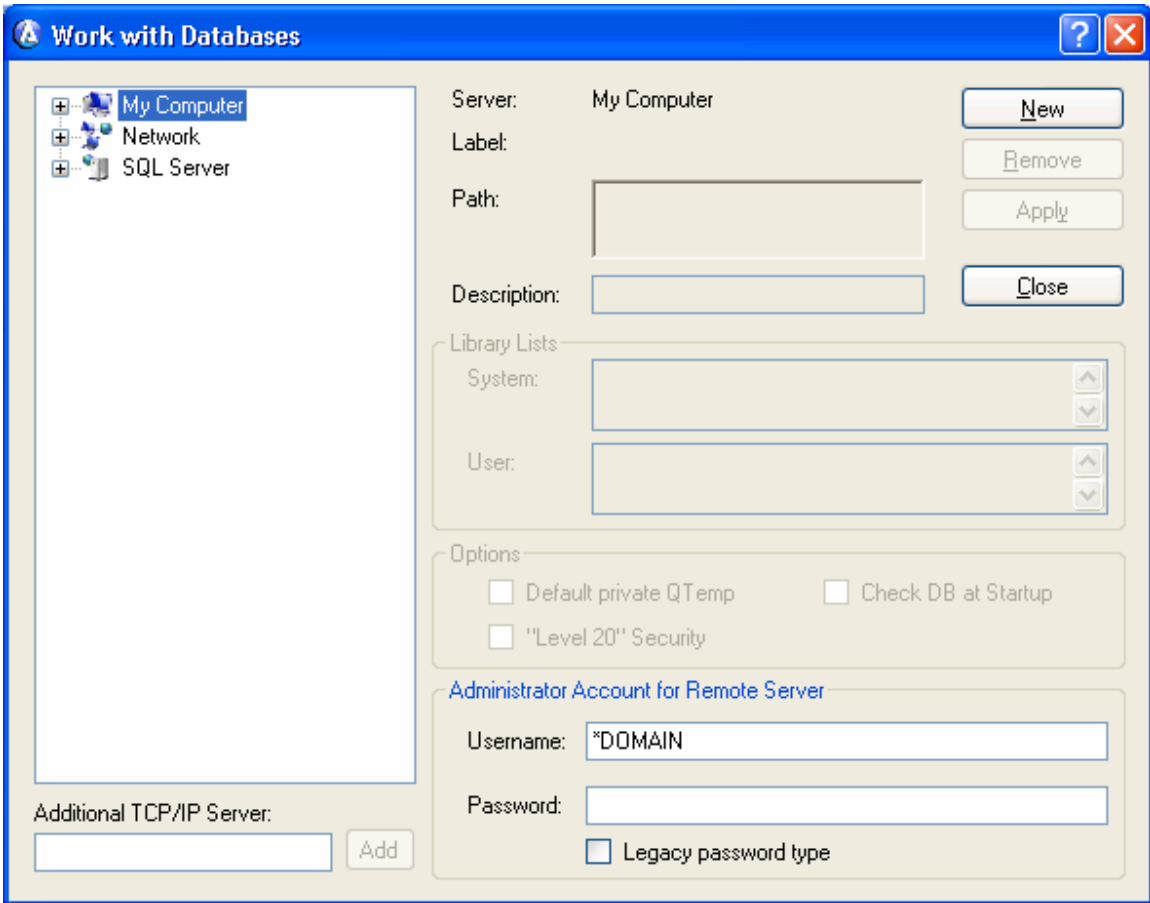
Databases from earlier versions of ASNA Visual RPG and Acceler8DB must be "**Labeled**" in order that they may be used with the latest release. This process upgrades the internal structure of the database and stores information that allows clients to register a name for it.

After creating a database, you will be prompted to register, or add a database name in order to open or access the database in applications.

You can also easily create a new DataGate for Windows database by selecting **Database Wizard** from the Database menu.

To Create a New Database

1. Select **Work with Databases** from the DataGate menu. The Work with Databases dialog box will display.



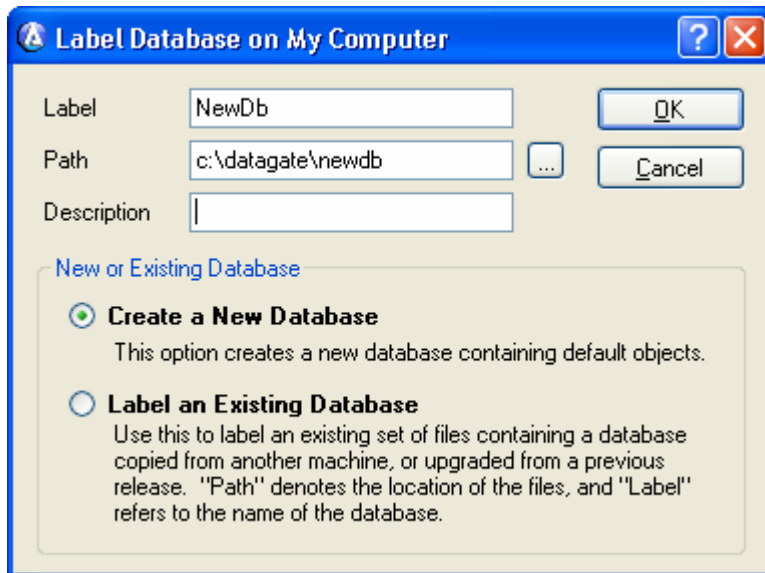
2. In the left-hand tree view, select My Computer, or expand the Network list and select a remote computer.
3. In the previous step, if you selected a remote computer, you must make sure that you have specified a valid username and password to authenticate access to that computer.


The default value for Username, “*DOMAIN”, is a keyword that causes DataGate Studio to use your current Windows Domain logon credentials to authenticate your access to the remote computer. In that case, you may leave the Password field blank. Otherwise, you must enter a user and password that has sufficient access on the remote computer to create the database.

If you have insufficient authority to create a new database, the command will fail.

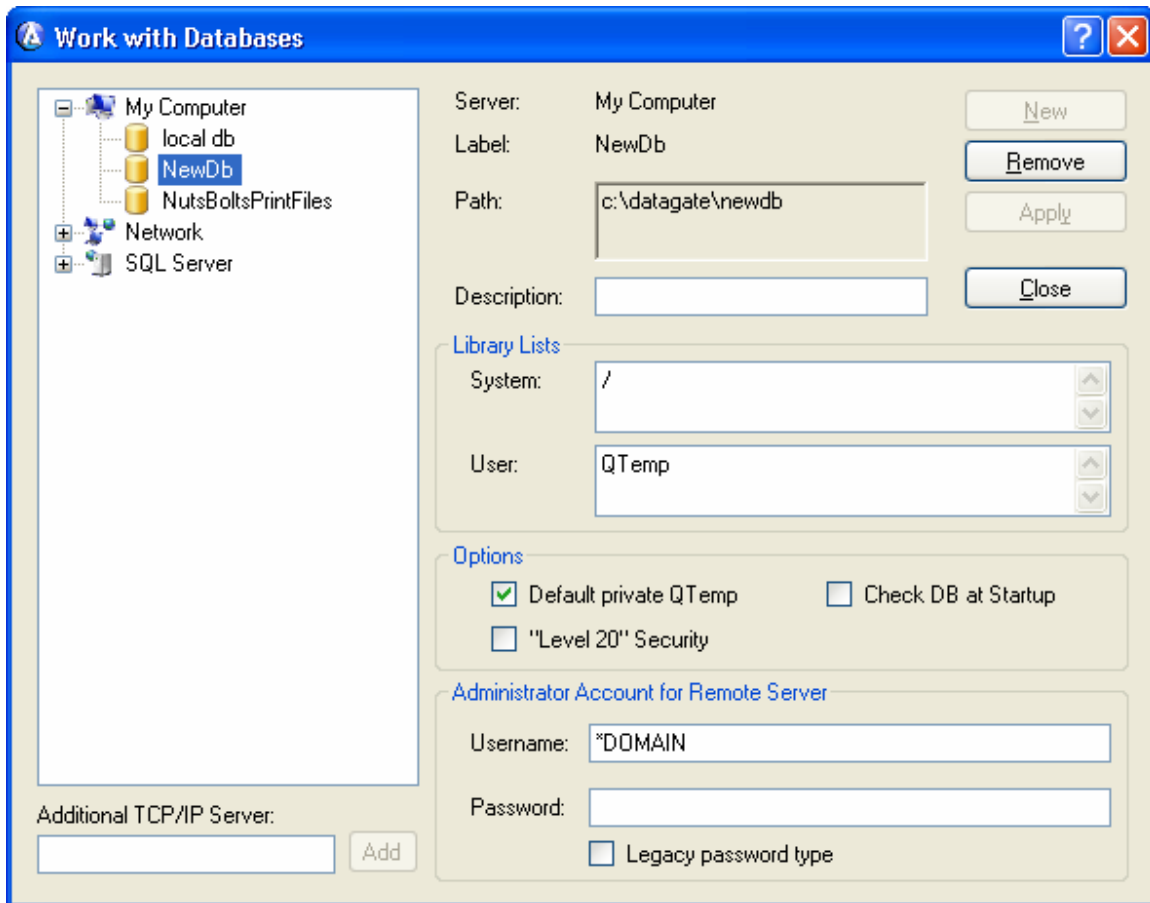
4. Select the **New** button to create a new database. The Label Database dialog box will display.

Note that this is the same command and dialog used to label an existing database. In this case however, we will invoke a DataGate command to create the files and folder comprising a new database. The Label Database dialog box is shown below.



5. Enter a name for the database in the **Label** field. The label is the database's name with respect to the server, and is distinct from the client application-oriented "database name" you will add later.
6. Enter the complete **path** of the directory in which the new database will be created, or where a database from an earlier version is located. If you are not sure of the folder in which the database will be placed, select the  button to the right to Browse for a database folder. After selecting a desired folder, you may wish to create a new sub-directory in which to place the database. (The subdirectory does not need to exist, it will be created for you). Note that the path and folder of the database must be empty).
7. Enter a text **description** of the database contents, if desired, entering up to 50 alphanumeric characters.
8. Under New or Existing Database, select **Create a New Database**.
9. Select the **OK** button. The database will be created, the Label Database dialog will close, and the new label will be selected in the tree view of the Work with Databases dialog

The figure below shows the newly-created database, labeled "NewDb", and its properties. The database is created with a default set of properties, which you can consequently modify on the Work with Databases dialog.



To use this database in an application, you will next need to create a database name to identify the database to the client. See **Working with Database Names** for more information.

Creating a New Database

You can perform DataGate for Windows server tasks with DataGate Studio, including creating a new database.

Creating a new database creates the internal catalog object, which maintains the set of attributes and relationships for all of the database files within a particular database.

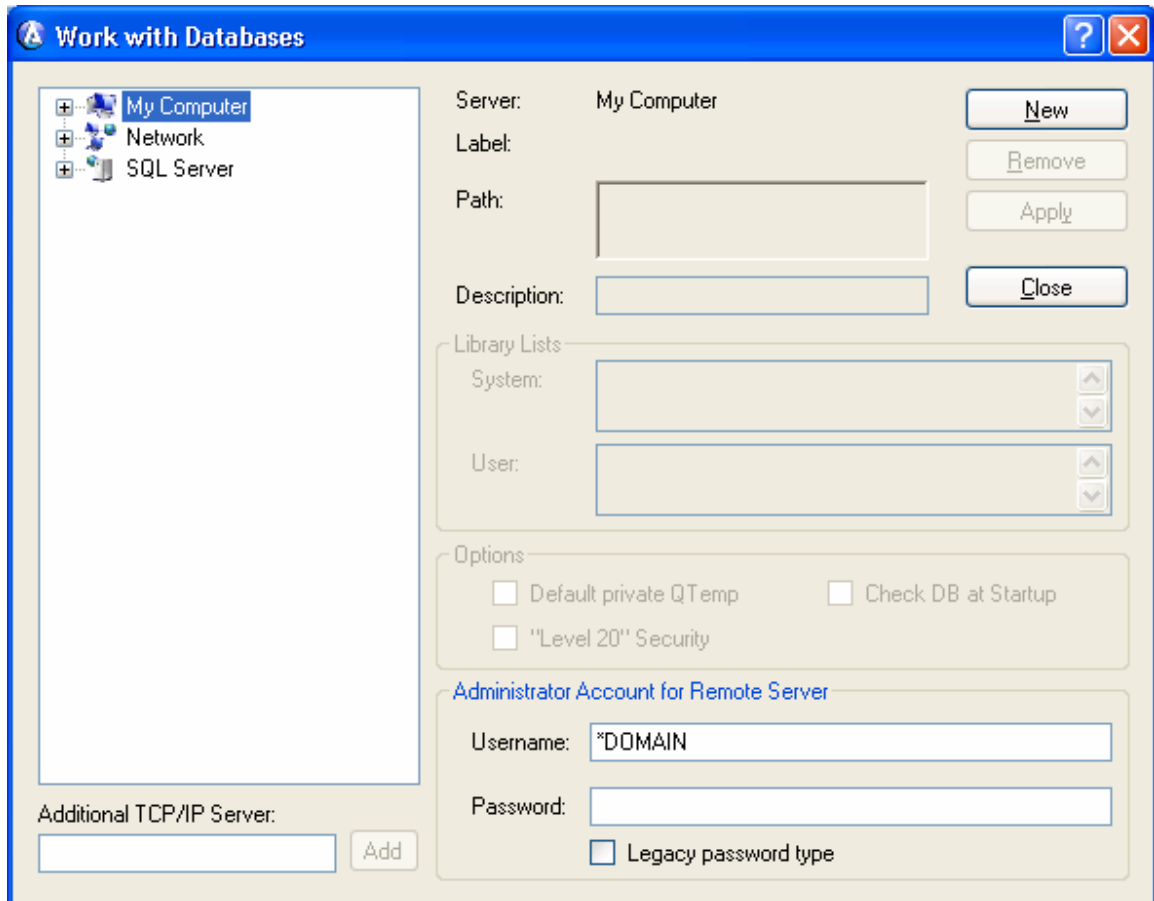
Databases from earlier versions of ASNA Visual RPG and Acceler8DB must be "**Labeled**" in order that they may be used with the latest release. This process upgrades the internal structure of the database and stores information that allows clients to register a name for it.

After creating a database, you will be prompted to register, or add a database name in order to open or access the database in applications.

You can also easily create a new DataGate for Windows database by selecting **Database Wizard** from the Database menu.

To Create a New Database

1. Select **Work with Databases** from the DataGate menu. The Work with Databases dialog box will display.



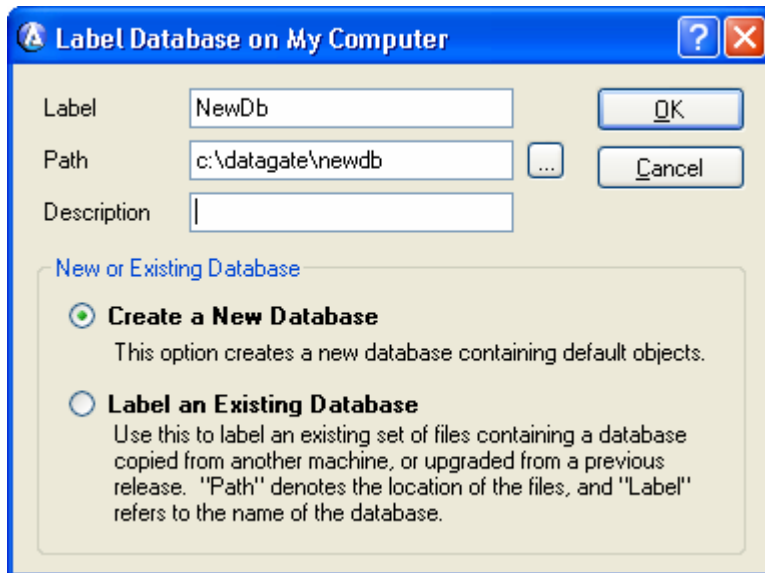
2. In the left-hand tree view, select My Computer, or expand the Network list and select a remote computer.
3. In the previous step, if you selected a remote computer, you must make sure that you have specified a valid username and password to authenticate access to that computer.


The default value for Username, "*DOMAIN", is a keyword that causes DataGate Studio to use your current Windows Domain logon credentials to authenticate your access to the remote computer. In that case, you may leave the Password field blank. Otherwise, you must enter a user and password that has sufficient access on the remote computer to create the database.

If you have insufficient authority to create a new database, the command will fail.

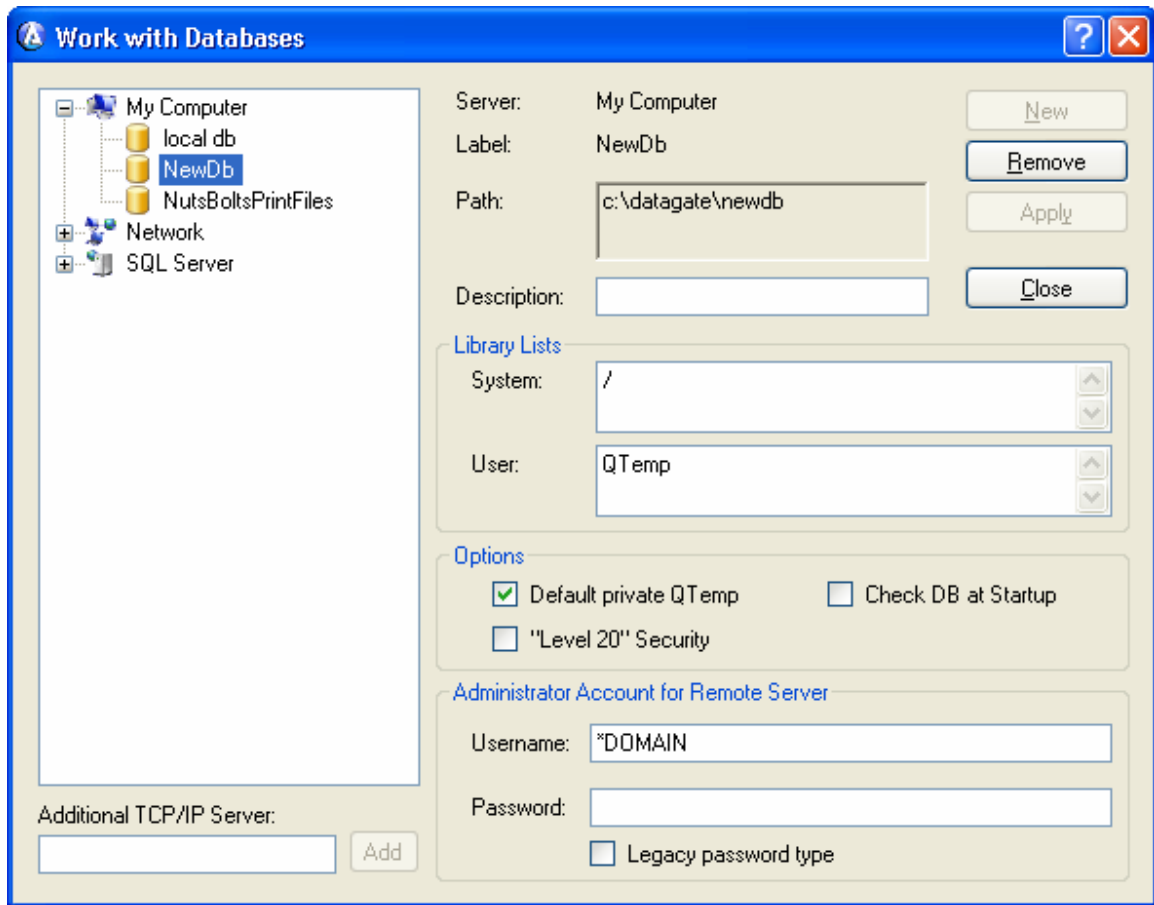
4. Select the **New** button to create a new database. The Label Database dialog box will display.

Note that this is the same command and dialog used to label an existing database. In this case however, we will invoke a DataGate command to create the files and folder comprising a new database. The Label Database dialog box is shown below.



5. Enter a name for the database in the **Label** field. The label is the database's name with respect to the server, and is distinct from the client application-oriented "database name" you will add later.
6. Enter the complete **path** of the directory in which the new database will be created, or where a database from an earlier version is located. If you are not sure of the folder in which the database will be placed, select the  button to the right to Browse for a database folder. After selecting a desired folder, you may wish to create a new sub-directory in which to place the database. (The subdirectory does not need to exist, it will be created for you). Note that the path and folder of the database must be empty).
7. Enter a text **description** of the database contents, if desired, entering up to 50 alphanumeric characters.
8. Under New or Existing Database, select **Create a New Database**.
9. Select the **OK** button. The database will be created, the Label Database dialog will close, and the new label will be selected in the tree view of the Work with Databases dialog

The figure below shows the newly-created database, labeled "NewDb", and its properties. The database is created with a default set of properties, which you can consequently modify on the Work with Databases dialog.



To use this database in an application, you will next need to create a database name to identify the database to the client. See Working with Database Names for more information.

Labeling an Existing Database

DataGate for Windows Databases from earlier versions of ASNA Visual RPG and Acceler8DB must be **"Labeled"** in order that they may be used with the latest release. This process upgrades the internal structure of the database and stores information that allows clients to register a name for it.

You can also easily Label existing Databases by selecting **Database Wizard** from the Database menu.

To Label an Existing Database

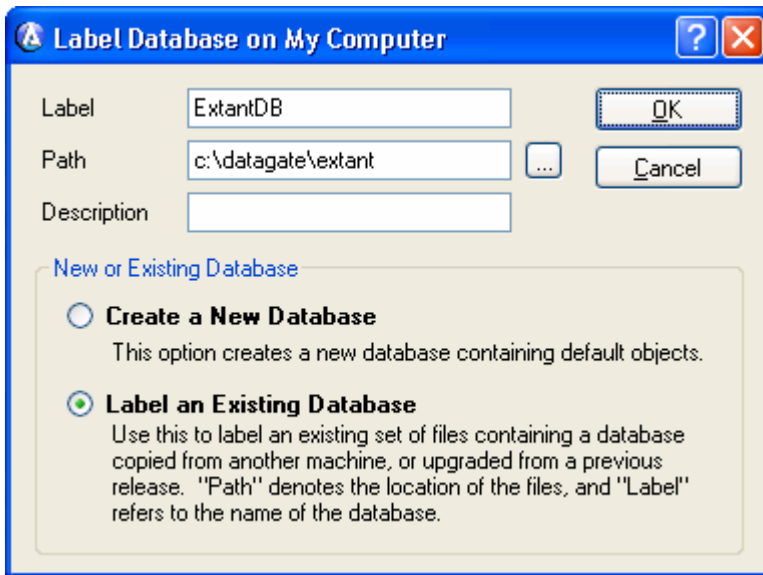
1. Select **Work with Databases** from the DataGate menu. The Work with Databases dialog box will display.
2. In the left-hand tree view, select My Computer, or expand the Network list and select a remote computer.
3. In the previous step, if you selected a remote computer, you must make sure that you have specified a valid username and password to authenticate access to that computer.

The default value for Username, “*DOMAIN”, is a keyword that causes DataGate Studio to use your current Windows Domain logon credentials to authenticate your access to the remote computer. In that case, you may leave the Password field blank. Otherwise, you must enter a user and password that has sufficient access on the remote computer to label the database.

If you have insufficient authority to label the database, the command will fail.

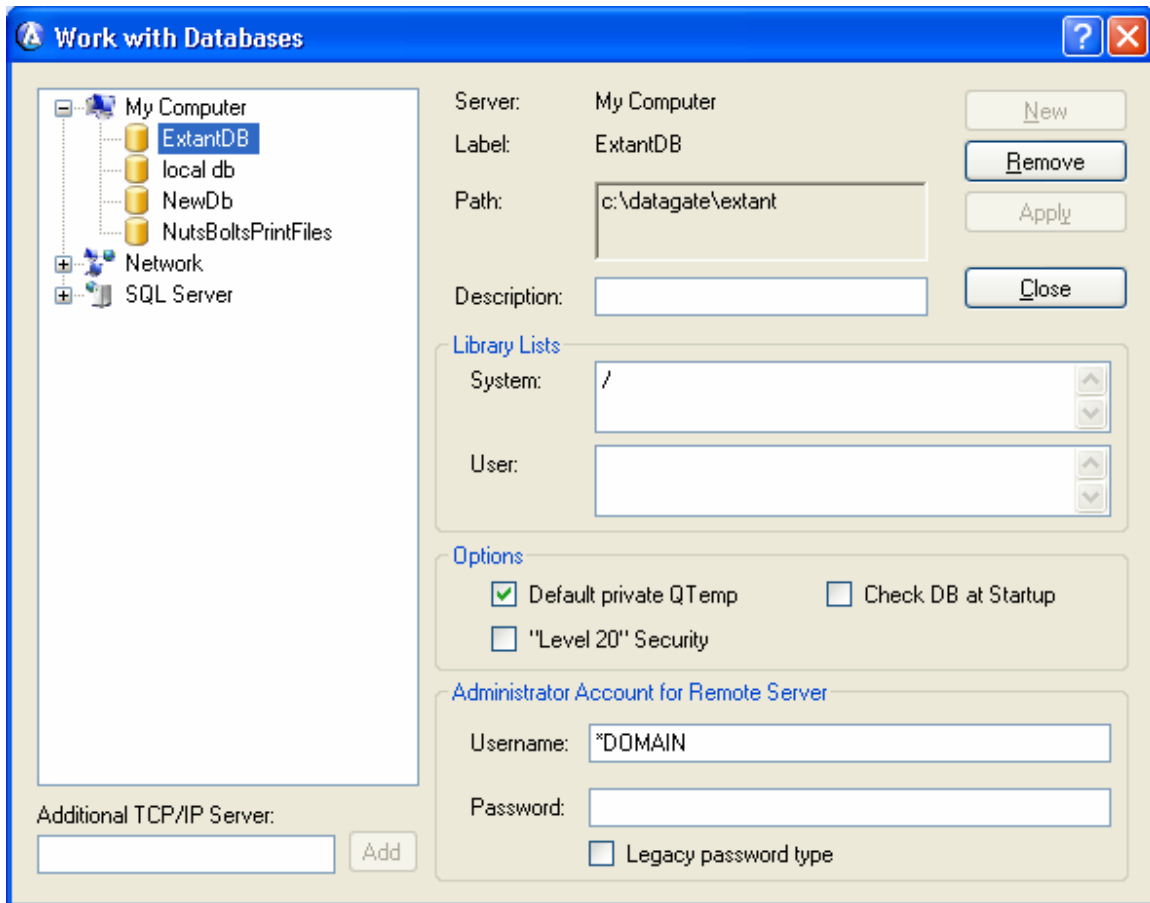
4. Select the **New** button to label an existing database. The Label Database dialog box will display.

Note that this is the same command and dialog used to create a new database. In this case however, we have the files comprising a DataGate for Windows database in a particular folder already. The Label Database dialog box is shown below.



5. Enter a name for the database in the Label field. The label is the database’s name with respect to the server, and is distinct from the client application-oriented “database name” you will add later.
6. Enter the complete path of the directory in which the existing database is located.
7. Enter a text description of the database contents, if desired, entering up to 50 alphanumeric characters.
8. Under New or Existing Database, select **Label an Existing database**.
9. Select the **OK** button. The database will be labeled, the Label Database dialog will close, and the new label will be selected in the tree view of the Work with Databases dialog.

The figure below shows the newly-labeled database, “**ExtantDB**”, and its properties. You may now modify the database’s properties if desired.



To use this database in an application, you will next need to create a database name to identify the database to the client. See Working with Database Names for more information.

Changing an Existing Database

Once a DataGate for Windows database has been created, you can change its description, library lists, and other options.

Use the **Work with Databases** menu option from the DataGate menu to make changes to a database.

You can also easily make changes to an existing database by selecting **Database Wizard** from the DataGate menu.

To Change a Database Configuration

1. Select **Work with Databases** from the DataGate menu. The Work with Databases dialog box will display.
2. The servers available will display on the left. Double-click on another server to change. If you need to view a TCP/IP server that is not shown, enter the name of the TCP/IP server and press the **Add** button to the right. The server will then be visible in the display box above. The server, label, path, description and other properties of the selected database will automatically display.

Note: If you wish to access a remote server, be sure and enter a valid username and password for validating access to the server, under "Administrator Account for Remote Server". The default value for Username, "*DOMAIN", is a keyword that causes DataGate Studio to use your current Windows Domain logon credentials to authenticate your access to the remote computer. In that case, you may leave the Password field blank. Otherwise, you must enter a user and password that has sufficient access on the remote computer to create the database.

3. Change the database's description, if desired.
4. Change the database's default library lists, if desired.

You may change the System library list or the User library list. Each field is a multi-line text box, in which you can enter as many library names (one per line) as the database server supports for each list.

The System library list is the library list that is imposed on all users of the database. The user you specify under "Administrator Account for Remote Server" must have sufficient authority to change the System library list.

The User library list is the library list associated with the current user (the user you specify under "Administrator Account for Remote Server").

5. Enable or disable any of the following options, if desired.

Default Private QTemp

Most DataGate servers, by default, provide each database job with a private QTemp library. If instead, you want a single QTemp library to be shared by all jobs, clear this checkbox. Note that DataGate/400 does not support the shared QTemp option.

Check DB at Startup

This option tells the DataGate for Windows server to open the database when it is starting (before accepting connections) to trigger automatic index recovery. Without this option, automatic index recovery is not initiated until a connection attempts to open the database. This option is only relevant for DataGate for Windows servers.

Level 20 Security

By default, DataGate for Windows connections are validated against the current domain or by username/password local to the machine where DataGate server is running. A valid connection provides automatic access to any database label available on the server. Designating level 20 security validates the connector's credentials against the specific label's root folder security setting, thus allowing the database to be independently secured from other databases on the server. Note that this option is only relevant for DataGate for Windows servers.

6. Select the **Apply** button to make the desired changes to the selected database.

Note: the Apply button will only be enabled if you have entered changes to the database's properties.

Removing an Existing Database

When you no longer need a DataGate for Windows database, you can remove it using DataGate Studio. The **Remove** button within the Work with Databases dialog "unlabels" an existing database, and optionally deletes the files and folders comprising the database from your computer.

Proceed with caution when deleting a database, as all libraries, files, members, and data contained in the database will also be deleted. This operation cannot be undone!!

Ensure that no applications will be accessing the database that will be removed.

Unlabeling a database retains the contents of the database, while making the database inaccessible. When a database is "unlabeled", the database cannot be accessed. Provide a new label to access the database again.

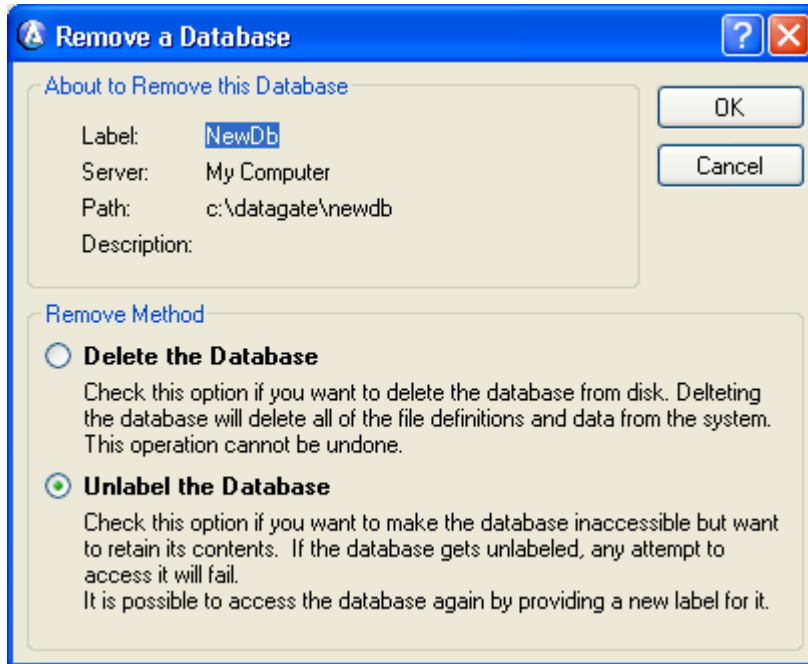
To Remove a Database

1. Select **Work with Databases** from the DataGate menu. The Work with Databases dialog box will display.
2. Double-click on a server in the display box in which the database to remove resides. Select the database to remove. The server, label, path, description and other options of the selected database will automatically display.
3. In the previous step, if you selected a remote computer, you must make sure that you have specified a valid username and password to authenticate access to that computer

The default value for Username, "*DOMAIN", is a keyword that causes DataGate Studio to use your current Windows Domain logon credentials to authenticate your access to the remote computer. In that case, you may leave the Password field blank. Otherwise, you must enter a user and password that has sufficient access on the remote computer to create the database.

If you have insufficient authority to remove the database, the command will fail.

4. Select the **Remove** button to remove the selected database. The Remove a Database dialog box will display to confirm the database to remove.



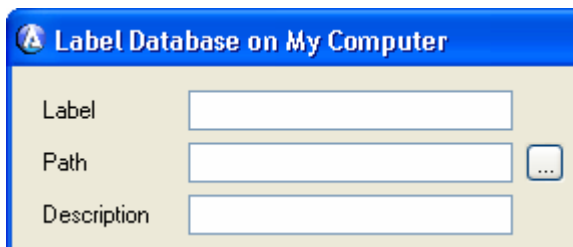
5. Select the **Delete the Database** option to unlabel AND delete the database files and folders. Select **Unlabel the Database** to only unlabel the database, without deleting its files and folders.

The default selection is Unlabel the Database. Remember that deleting the database causes all data to be permanently lost! A database that is removed by unlabeling only can be recovered by re-labeling.

6. Select the **OK** button. The database will be removed and you will return to the Work with Database dialog box.

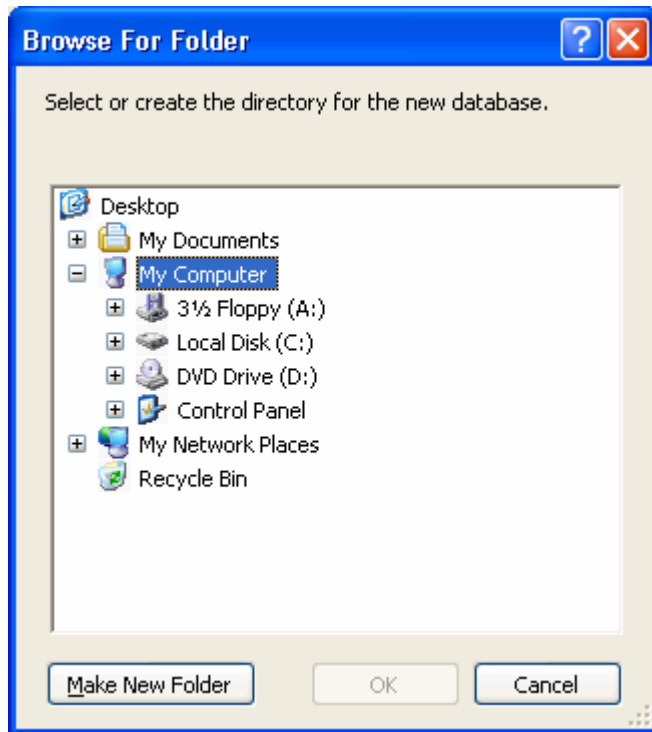
Browsing for a Database Folder

When creating or labeling a database, you can browse for the folder in which to place or find the database by selecting the **Browse** button to the right of the Path field, as shown below.



To Browse for a Database Folder

1. Click the  button to the right of the Path field. The following dialog will display:



2. Enter or select the following information to the Browse For Folder dialog box.

Display Box:

The folders for the selected server will display. Select the desired folder in which to add a database to.

OK Button:

Select **OK** when a folder has been selected or to close the Browse for Folder dialog box and return to the **Label** Database dialog box.

Cancel Button:

Select **Cancel** to cancel browsing for a folder.